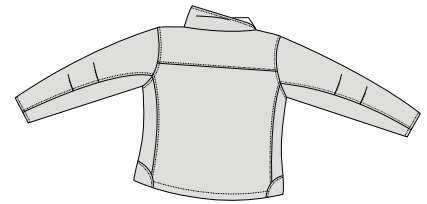


# Ladies Glacier Soft Shell Jacket

PORT AUTHORITY®



Front



Back

L790

- \* 100% Polyester stretch woven shell fabric bonded to 100% Polyester Microfleece
- \* Laminated film insert \* Wind and water resistant \* Front zippered pockets
- \* Chest zippered pockets \* Open bottom hem \* Lycra-trimmed cuffs \* Princess cut

Care Instructions:  
Machine wash cold. Do not dry clean.  
Do not Iron. Do not Bleach. Do not  
tumble dry.

## Finished Measurements in Inches

Size	XS	S	M	L	XL	XXL	Plus 1X	Plus 2X
Length	22.5	23.5	24.5	25.5	26.5	27.5	28.5	29.5
Chest	19	20	21	22.5	24	25.5	28	30.5
Sleeve	30	31	32	33	34	35	35.5	36.5
Sweep	18.5	18.5	20.5	22	23.5	25	27.5	30
Areas for Decoration	L/R Chest		Port Pocket™					

Chest width measured 1" below arm hole. Body length measured from back neck seam to hem.  
Sleeve length measured from center back seam to hem.

## Colors

	Atlantic Blue/Chrome
	Black/Chrome
	Olive/Chrome
	Brown/Chrome
	Caldera Red/Chrome
	Lilac/Chrome
	Smokey Grey

Please Note:  
Colors shown are approximate and for reference only. For closest match see PMS colors, or for exact match, returnable samples and grommeted samples are available.

## Color Chart

Jacket Colors	Atlantic Blue	Black	Olive	Brown	Caldera Red	Smokey Grey	Lilac
Textile PMS	18-4215TC	19-4006TC	18-0513TC	No Match	No Match	No Match	No Match
General PMS	7545C	Process Black	417C	7519 C	202 C	424 C	7444 C
Accent Colors	Chrome						
Textile PMS	16-4404TPX						
General PMS	Cool Grey 7C						